

Crystal Vision

STATESMAN PC CONTROL SYSTEM Version 4



Statesman brings user-friendly, time-saving and flexible control and status monitoring to the Crystal Vision product range. This Windows based system makes it easy to configure and operate the remote-enabled interface and keying modules using a PC.

Statesman 4 has been designed to work over Ethernet meaning you can control your system from anywhere. You don't even need special cables; just plug it into your normal Ethernet network using industry standard CAT5 cables. Statesman 4 is available in two versions. 'Single PC' is for those who want to connect just one PC to multiple frames via Ethernet and uses an SQLite database. 'Multi PC' has been designed for those who want Statesman control from multiple PCs on a network and offers the security and scalability of the powerful MySQL database system. The Statesman database does not have to be located on the master PC but can instead be on the main company server, for example. For those who need it, the RS422 system is also fully supported.

There are two essential items you need to use Statesman: a free CD containing the basic software and a USB dongle which fits into the USB port on the master computer. An enabling code (available on disk or by e-mail) empowers the dongle with the features the user is entitled to have, including the number of boards able to be controlled and the Signal Path option, if purchased. The dongle comes with a licence for two boards and entitles the user to a year's maintenance which includes support and any software updates. Additional licences can be purchased for individual boards, allowing Statesman to adapt perfectly to every size of application - large or small.

THE GRAPHICAL USER INTERFACE

With Statesman comes flexibility. The control pane is split into two sections, meaning you can either view two different boards at the same time or two sub-menus for the same board.

Statesman 4's new-look interface presents your system information to you using a logical, easy-to-access structure thanks to four new tabs. Select the System layout tab to see your frames and the boards they contain. Alternatively choose the A to Z tab to view all the boards in alphabetical order. The remaining two tabs show any composite modules or signal paths you've created. This means you can get at any information you need with very few clicks of the mouse.

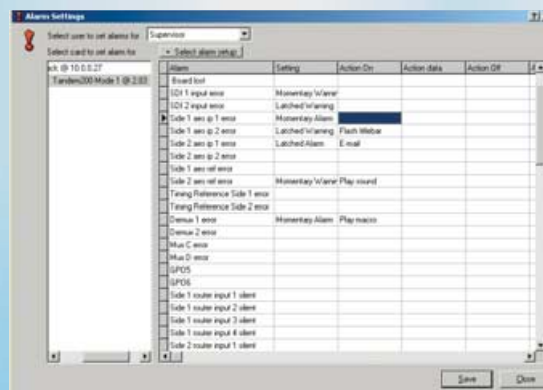
STATUS MONITORING

Providing see-at-a-glance status monitoring, Statesman can be used to monitor the current state of the boards - either by examining control values and virtual LED settings or by setting alarms.

Each board has a customised set of alarm options. Clicking on a board name from the Statesman Settings/Alarm Settings menu reveals a list of all possible alarms for that board, which can be set by selecting options in the Setting and various Action fields.

The Setting field is used to determine the action taken when an alarm condition occurs:

- Mask alarm: ignore
- Set latched alarm: warning stays active until acknowledged
- Set momentary alarm: warning disappears if the alarm condition goes away



Alarm Settings menu

The Action fields are used to choose how the user will be notified if there is an alarm condition. Here there are a wide range of options:

- A flashing Statesman title bar
- An unlimited choice of user definable sounds through PC speakers
- An e-mail message to an address of your choice (requires Internet connection for outgoing message)
- A macro can be triggered (see Control section for details)



Alarm log viewer

Current alarms are featured in the Alarms window on the main GUI and can be sorted by time, location and type for ease of viewing. Alarms are additionally highlighted in the racks window, with the board icon turning red to signal an unacknowledged alarm.

All alarms can be viewed and analysed using the Alarm log viewer which is accessed from the View menu. Comments can be added and alarms can be viewed between given dates and exported to an external file or completely deleted. The preset view categories include View today, View yesterday, View last used and View all.

It's not only the boards that can be monitored. You can see the status of the frame itself by double-clicking on it in the racks window. A GUI will appear giving useful information such as the frame serial number, which power supplies are fitted, the internal frame temperature and confirmation of the fans working.

CONTROL

Statesman can also be used for real-time control of boards.

Each board has a specially designed GUI, with the large, clear display offering controls presented in a user-friendly graphical manner - resulting in instinctive operation of even the most complex module. The sliders, dials, trackerballs, buttons, checkboxes, radio buttons and routing grids allow easy selection of options with a simple click of the mouse. All control options are easily available from tabs which line up across the screen, while windows can be user-resized for convenience.

Yellow sticky notes can be used as reminders, to highlight information or to hide controls. Attaching a note is easy: right-click any control menu tab and select Write Note, and then enter the required text in the box provided. The notes can be moved or resized for optimum placement.

Macros enable sequences of commands or menu operations to be recorded and played back at a later time. This feature is intended to be used to automate the process of setting up effects which need to be applied in sequence on a regular basis. Macros can also be used to react to alarm conditions by activating automatic changes - for example, video going off air could trigger a macro to set a router to display a holding screen. You can clearly see all the macros running on your system using the box in the bottom right hand corner of the main GUI.

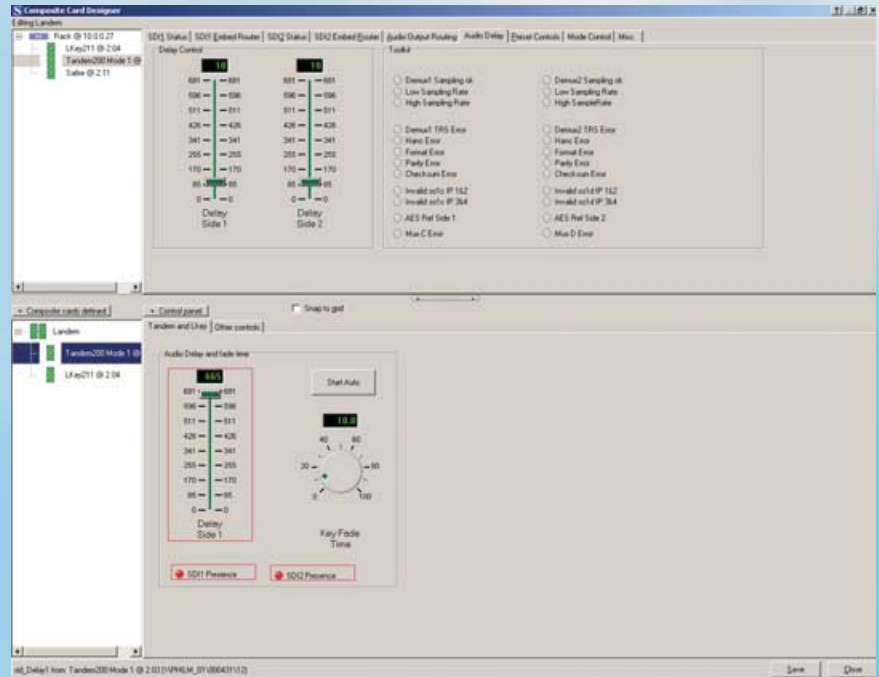
Controls can be ganged to enable them to maintain the same value when moved - especially useful for sliders. A popular application could be to fade several pictures up at the same time, for example. The ganged controls can be taken from as many different boards as you like: just build a composite module first.



CONTROL (CONTINUED)

Composite modules are custom modules created from components taken from different boards. They are generally used to limit user interaction, simplify operation or assemble features for specific control purposes. Creating composite modules is easy and is done through the Composite Modules Designer on the Statesman Settings menu. Group boxes are created and populated with controls which are dragged from the donor modules. Both the composite module and group boxes can be given relevant names.

Here we have created a composite module from two donor modules - an LKEY211 linear keyer and a TANDEM-200 audio embedder/de-embedder. Clicking on the TANDEM-200 name in the left hand window highlights in red the controls which come from that module. This would help avoid confusion if you were using multiple boards of the same type, for example. Duplicating composite modules provides a fast way of creating a number of similar composite modules that only differ in minor detail.



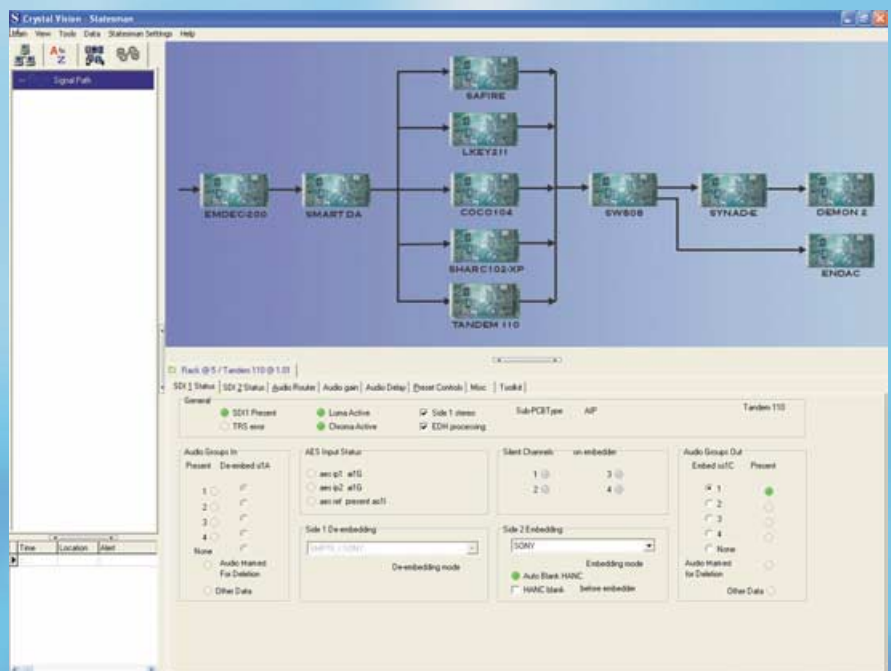
Composite Modules Designer

SIGNAL PATH

Signal Path is an optional add-on to Statesman 4 designed to make customers' lives easier. Effective in both large and small systems, it provides a graphical way of monitoring particular signal paths, presenting a view of the system based more on the way the boards are used rather than their rack location. This makes the signal path view easier to understand, provides effective system monitoring and allows easy diagnosis of the cause of any alarms. There is no limit to the number of signal paths that can be created and stored. It is even possible to have signal paths within signal paths. This makes your view of the system less cluttered yet still allows you to quickly drill down to the individual board if a problem occurs.



Using Signal Path is quick and easy. To set up a new signal path open the Signal Path Designer on the Statesman Settings menu, choose the "New Signal Path" option and enter a name. Now it's time to import a background picture to represent the signal flow. This can be any GIF, JPG or BMP that you have created in a graphics program, or one of the default images provided with Signal Path to get you started. You can scale the images, allowing you to design the signal path at a size that suits you and that can be successfully viewed on different monitors. Your signal flow image now appears in the main view of the designer: drag the boards, composite modules or signal paths from the tree view on to the relevant blocks. You can choose to replace the default Statesman display icons with more relevant graphics such as PCB photos, as in the picture here. You now have a clear view of your signal path: if an alarm condition arises the relevant block will be outlined in red allowing you to react swiftly.



Signal Path Designer

OTHER USEFUL FEATURES

Statesman does all the hard work for you - and saves you time too. Adding boards to the system is automatic and will typically take less than ten seconds, even for large installations. You can easily nominate which boards are to be covered by your purchased licences by using the Select Boards to Control menu. Once you're up and running, operation of boards is instant.

Right-click on a board to change its name to something which clearly identifies it, up to 32 characters long. The original name can later be reset if required.

Statesman provides a fast method of applying the same settings to a number of identical boards by allowing you to copy any settings from one board to another. The board settings can be saved to either the database or a separate file, both for back-up security purposes and to allow studios to be set up in the same way. The ability to store any presets as well as the current settings gives you the power to completely restore a board.

You can back up the Statesman system itself, including users, alarms, board renaming, composite modules and signal paths, and restore it from file. This means that - should the worst happen - you can quickly have an identical Statesman system up and running without having to re-enter the details.

If you need different people in your company to have access to different levels of control, no problem. Statesman's user management tools provide password controlled operator access with selectable visibility and operation capability on a frame and board basis. In the User Settings menu names can be assigned so that each user sees different and meaningful names for the same frames and modules. The modules in client copies of Statesman can be temporarily locked to prevent control access.

The Update Control Panel Data menu allows you to import a file from Crystal Vision. This may have a replacement GUI for an existing board which has just gained a new feature, or a complete GUI for a brand new board.

Assistance is offered by a standard Windows Help file, making Statesman even easier to use.

Statesman is a product for everyone, whether you need to control or monitor large installations, or whether you have a small system which incorporates boards with the powerful features that really benefit from the intuitive control offered by a GUI.

TRY OUT STATESMAN FOR FREE

The demo version of Statesman allows you to see just what the software can do for you.

Showing the GUIs for all the Crystal Vision boards, the demo version works without a dongle and allows you to fully explore Statesman's functionality. The operational screens of every product can be opened and the controls operated. All the available alarms can be viewed and composite modules can be created. No real boards can be operated by the software and changes made to board configurations are not saved.

The Statesman demo version is free of charge for customers to evaluate and is available on the main Statesman CD. Installing the software will add a Statesman demo item to your Windows Start menu, which you can click on to start the program. Statesman CDs are available from Crystal Vision on request.



WHAT DO YOU NEED TO RUN STATESMAN?

- Any computer running Windows 2000 or XP
- USB port for dongle
- Control via TCP/IP or an RS232/422 COM port

ORDERING INFORMATION

Statesman 4 CD	CD containing Statesman software (free of charge and suitable for Statesman demo)
ST4DongleUSB02	Activating USB dongle. Includes Statesman licence for two boards
ST4Licence01	Additional Statesman licence for one board
ST4SPDongleUSB02	Activating USB dongle for Statesman 4 with Signal Path option. Includes licence for two boards
ST4SPLicence01	Additional Statesman licence with Signal Path option for one board
ST4-MULTI-PC	Licence required if using more than one PC
GPI36	36 channel GPI card. Extends reach of Statesman to any product that can generate or accept GPI signals, including third party equipment
Indigo 4SE	4U frame with passive front panel fitted with Statesman CPU for up to 24 Crystal Vision modules
Indigo 2AE	2U frame with active front panel for up to 12 Crystal Vision modules
Indigo 2SE	2U frame with passive front panel fitted with Statesman CPU for up to 12 Crystal Vision modules
Indigo 1A	1U frame with active front panel for up to six Crystal Vision modules
Indigo 1S	1U frame with passive front panel fitted with Statesman CPU for up to six Crystal Vision modules
Indigo DTA	Desk top box with active front panel for up to two Crystal Vision modules
Indigo DTS	Desk top box with passive front panel fitted with Statesman CPU for up to two Crystal Vision modules

NOTE: 1U frames and desk top boxes operate with RS422 control. Ethernet versions of these are expected to be released soon.

Crystal Vision Ltd.

Lion Technology Park
Station Road East
Whittlesford, Cambridge
CB2 4NL, England
Tel: +44 (0)1223 497049
Fax: +44 (0)1223 497059
E-mail: sales@crystalvision.tv
www.crystalvision.tv