

digital keying modular
interface audio
converters analogue video

Quick Start Guide

Indigo frames with software v4.6



Contents

Introduction	2
Set the default IP address 10.0.0.201	2
CoolFlow 2U and 4U frames – later models	2
Indigo / CoolFlow 2U and 4U frames – earlier models	3
Indigo 2AE	3
Indigo 1U and DTSE	3
Setting up the PC's Local Area Network	4
Indigo Home Page	4
Indigo Setup Pages	4
Network Setup	5
Alternative method to access Network Setup	6

Introduction

This Quick Start Guide covers the setting up and controlling of Crystal Vision Indigo frames fitted with frame software v4.6 and above, using a PC web-browser connected to the frame via an Ethernet connection. This manual is relevant for the following frames: Indigo 2SE CoolFlow, Indigo 2AE, Indigo 4SE CoolFlow, Indigo 1SE & 1AE (including dual PSU models) and Indigo DTSE.

This manual shows how to:

- Set the frame's default IP address.
- Set up a PC's LAN controller to access the frame.
- Access the Setup pages to program a new IP address.

The frame can be connected to a network port or directly to a PC from the rear panel RJ45 port labelled 'Ethernet'. Usually, if connecting directly to a modern computer, a straight CAT5 cable only is needed. A crossover cable might be necessary with older equipment.

Indigo frames are shipped with an IP address of 10.0.0.201 but in the event that a frame's IP address has been changed and is unknown, then the following shows how to force the IP address to its default value:

Set the default IP address 10.0.0.201

CoolFlow frames are now shipped with a CPU board containing a 6-way DIL configuration switch. Older frames use a 4-way DIL switch. Both types are shown below.

Once the configuration switch has been moved to the default IP position the front panel PCB must be power cycled in order for changes in the switch settings to be implemented. This can be achieved by either briefly interrupting the power to the frame or, if this is not convenient, removing the ribbon-cable connection to the front panel. Care must be taken not to bend any pins in the cable connect as attempting to re-straighten any bent pins will likely result in their fracture. **Note that the newer CPU board has a reset switch which can be pressed instead of power cycling.**

CoolFlow 2U and 4U frames – later models

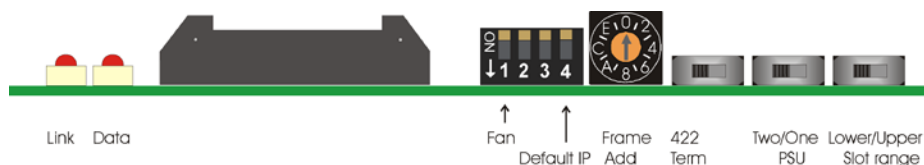
For Indigo 2U and 4U frames, the configuration switches and status LEDs can be found on the upper edge of the front panel PCB.



Later model 4U/2U CoolFlow board top-edge switches and LEDs

To set the default IP address, set DIP switch 6 to the down position and press the 'Reset' switch or power cycle the front panel PCB or frame. **Note that the Indigo 4SE CoolFlow frame has two front panel PCBs – it is the DIP switch on the lower PCB that sets the default IP address.**

Indigo / CoolFlow 2U and 4U frames – earlier models



Older Indigo 2U and 4U frame PCB top-edge switches and LEDs

To set the frame to the default IP address (10.0.0.201) set switch DIP4 to down and power cycle the front panel PCB or frame. **Note that the Indigo 4SE CoolFlow frame has two front panel PCBs – it is the DIP switch on the lower PCB that sets the default IP address.**

Indigo 2AE



Indigo 2AE board top-edge switches and LEDs

Set the frame to the default IP address (10.0.0.201) by setting the default IP address switch DIP4 to down and power cycle the front panel PCB or frame.

Indigo 1U and DTSE

For the 1U frame and desk top box, set switch S2 on the upper PCB to the left to set the default IP address and the frame power cycle.



Indigo 1U frame PCB top-edge switches and LEDs

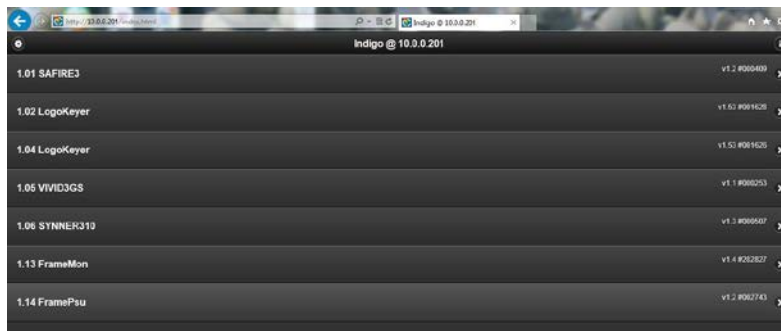
Setting up the PC's Local Area Network

Set the PC's Local Area Connection (LAN) controller's sub-mask to 255.255.255.0 and the IP address within the same IP group i.e. 10.0.0.250. For Windows 7 users this is most easily accessed from the Network and Sharing Centre. See individual frame's manual for more detailed help.

Indigo Home Page

To access the Home page, open up your web browser* and enter the IP address 10.0.0.201, the web page displayed is the Indigo home page that shows the names of the cards installed, the slot number they are fitted into, and the firmware version and serial number. This page will give status information about the frame, its power supplies and means to access each card's controls.

**Recommended web browsers include IE10 and Google Chrome.*



Indigo Home page

Indigo Setup Pages

Click on the circle at the top left of the Home page to open the Indigo Setup home page:



Click on the 'house' icon to return to the Home page:



The Setup page gives access to other pages that enable adjustment and give information of Network, Hardware, SNMP settings and diagnostic information:



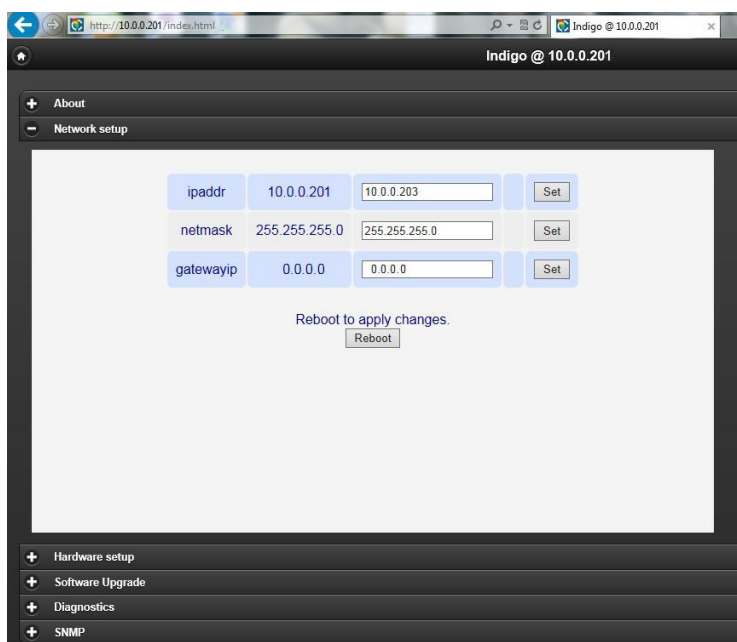
Indigo Setup page

Network Setup

From the Setup home page, clicking on the Network Setup link will bring up the Network Setup page. If the installation includes more than one Indigo frame then the IP address will need changing as all frames need a unique IP address. Enter the new IP address in the **ipaddr** edit box and click on 'Set'. In the example below, the IP address will be changed to 10.0.0.203 from its default value.

The **netmask** address can also be changed on this page if required. The Gateway IP address should be set to 0.0.0.0 in the **gatewayip** box unless a router is in circuit, in which case the correct gateway address should be entered. Click on 'Reboot' to implement the changes and the web page should refresh itself showing the updated parameters.

The 'Default IP' DIP or slide switch must be returned to the up/right position and the front panel power cycled. This can be achieved by either briefly interrupting the power to the frame or if this is not convenient, removing the ribbon-cable connection to the front panel. Care must be taken not to bend any pins in the cable connect as attempting to re-straighten any bent pins is likely to result in their fracture. Should incorrectly formatted information be added, an error dialogue box will be displayed indicating the likely cause of the errors.

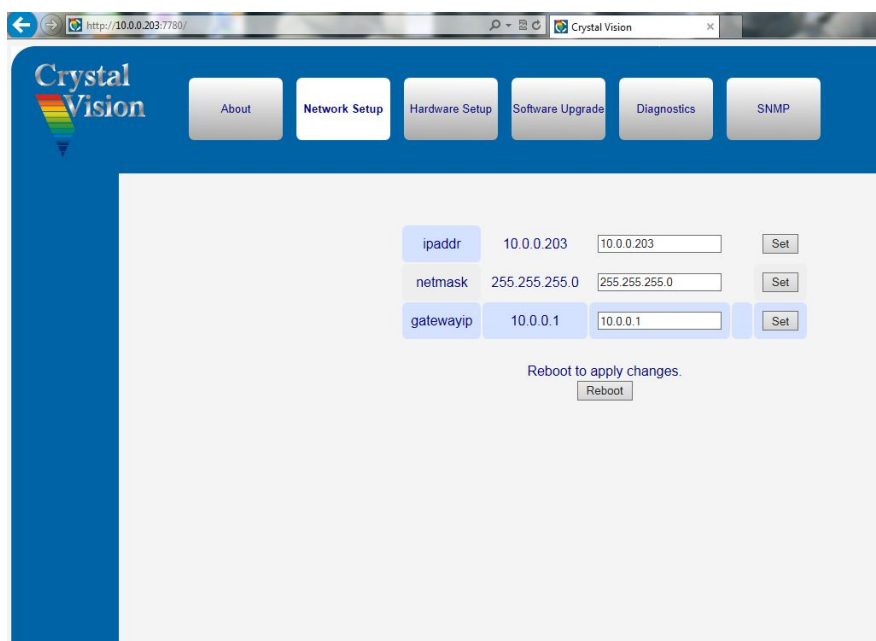


Indigo 'Network Setup' page

Alternative method to access Network Setup

An alternative method of accessing the Setup home web page is to use port address 7780. Connect your web browser and enter the frame's IP address (10.0.0.201 as default or if you've set DIP 4 to down) followed by port address 7780 i.e. 10.0.0.201:7780.

This will bring up the older style web page:



Indigo Setup home page accessed via port 7780

The function of the tabs is identical to that shown previously.